



# NATURAL STATE



PO Box 1581 Murray Bridge SA 5253  
Phone : 0439 727 057 Email: [matt@naturalstate.com.au](mailto:matt@naturalstate.com.au)  
[www.naturalstate.com.au](http://www.naturalstate.com.au)

## Welcome to the 7th edition of the Natural State Newsletter ' Spring / Summer-07 '

This is our newsletter aimed at anyone interested in revegetation and nature in general.

Natural State is a private revegetation business started in 2002. We offer a range of services in the SA Murray Darling Basin, Adelaide Hills/Plains, Fleurieu Peninsula and the South East of SA. We don't just talk about it, we actually make things happen on ground!

This newsletter is intended for screen viewing, with links for email and web addresses, helping to reduce paper use.

### SA Great award winners - Science & Sustainability

On November 27th 2007 Natural State won the Science and Sustainability award for the Murraylands / Riverland region in SA.

It was in recognition of our hard work and dedication to the conservation of nature, being based in this region.

Over the past year we have been involved in some really important and exciting projects.

I would like to thank the Murraylands Regional Development Board for nominating us.

On the award night we were working up at Port Pirie for a few days and couldn't make it. We found out the next day when friends & the local paper rang to congratulate us!

It was very satisfying to win this award and it is a great honour which we are very proud to receive.

Thank you to all of the people who have congratulated us in person, by phone and email.... cheers!



Above: The Natural State team - Kevin Baxter, Jake Coombe (holding the award), Matt Rose and Nic Johnston.



Above: Matt & Karina in Sydney for the Chinese New Year.  
Kung Hey Fat Choy - Happy New Year

### Holiday season

This summer we have had a well deserved holiday break.

Due to the extreme summer weather and the right to have at least 4 weeks off a year we will be taking annual leave at this time of year from now on.

The team are currently back at work collecting seed and working on landscaping projects.

Matt has taken an extended break and will be back at work from March 3rd.

This is the first real break that the team have had after such a busy year.

We really appreciate your patience over this time and look forward to a happy & productive 2008.



Above: Kevin holding our Murray Darling Carpet Python

## Staff Profile - Kevin Baxter

Introducing Kevin Baxter from Taillem Bend who has been with Natural State since August 2006. He has 4 years experience in the revegetation / bushcare field.

He has experience in willow control, seed collection, bushcare work, weed control, tree planting, direct seeding, nursery work, site maintenance, landscaping and customer service. He also has a Certificate 2 in Horticulture.

Kevin is a dedicated family man and in October '07 witnessed the birth of Ethan with his girlfriend Kellie.

Kevin is a reliable & hard working team member. He contributed greatly to the recent success we achieved with the SA Great Award. Thanks for your support Kev!

## Change of business premises and details

From March 31st we will no longer be using the Taillem Bend nursery site as our depot, we have scaled back the nursery production & do not need such a big site.

We have held the lease of this site for over 4 years. Over that time we have improved the infrastructure, planted native gardens and revegetated the paddocks using indigenous plants.

I would like to thank the Coorong District Council for their support over the years.

Natural State will be based in Murray Bridge from April 2008.

Business enquiries and contact details are now :

Email - [matt@naturalstate.com.au](mailto:matt@naturalstate.com.au)  
 Matts mobile phone - 0439 727 057  
 PO Box 1581 Murray Bridge SA 5253  
 The website - [www.naturalstate.com.au](http://www.naturalstate.com.au)



Above: The old sign at the front gate in Taillem Bend

## Did you know ?

The Blue Mountains is situated approximately 60 Km's west of Sydney.

The greater Blue Mountains World Heritage Area is 1,000,000 hectares of remote wilderness, mountain ranges and scenic rivers. It includes 7 National Parks.

At least 14,000 years ago Aboriginal people were living in these mountains.

The first European crossing was in 1813 by Blaxland, Lawson and Wentworth. The first road was in 1815 which opened up the fertile western plains to the European settlers.

The national park was declared in 1959 and became a World Heritage Area in 2000.

There are camping grounds, bush walks, horse riding tours & many small towns to explore.

A rail trip from Sydney is only an hour and a half away.



Above: The Blue Mountains world heritage area near Katoomba, NSW.



## Tokeuremoar Reserve

During November '07 we started a project near the Goolwa foreshore. The site is called Tokeuremoar Reserve and the job requires that we control as many introduced *Acacia cyclops* - Coastal Wattle, *Leptospermum laevigatum* - Coastal Teatree and *Lycium ferocissimum* - African Boxthorn as the budget allows.

For this project we have formed a partnership with another contractor Myall Productions. Ben Simon from The Goolwa - Wellington LAP secured a budget of \$18,000 from the Envirofund.

With 8 men chainsawing and working long hours, chemical costs and a chipper used at \$1000 / day it doesn't take long for the money to go.

The pile of branches in the photo is less than a mornings work, ready to be turned into mulch.

Above: *Acacia cyclops* prunings from the Tokeuremoar Reserve at Goolwa

## Mt Gambier bridal creeper control

During late August '07 we were involved in spot spraying the Western Cape form of Bridal Creeper in the native forests around Mount Gambier in the South East of SA.

The contract was for 5 days work with 4 men, including all chemicals, travel and accomodation.

We used 200L & 400L tanks with handlines, 4 x backpacks and also a 900L water tank used as our water source.

The native forests and pine forests were a pleasant change from the local mallee where we get most of our work. We were lucky with the weather being conducive to spraying for the whole week.

We had a great time whilst working hard and getting alot of area covered. The sites were around Donovans Landing in SA and Nelson in Victoria.



Above: Kevin spot spraying Bridal Creeper near Mt Gambier

## Caloote Landcare group

On June 22nd 2007 we direct seeded approximately 12 linear Km's on a property at the riverside town of Caloote, south of Mannum.

This site is crown land under the official control of DEH - Department of Environment & Heritage.

The adjoining landowners and local eco warriors Max & Jacque Merckenschlager have been the driving force behind the project, with the support of the Caloote Area Landcare Group.

Other works have included rabbit proof fencing the site, rabbit control, weed control, tubestock planting, seed collection and continual monitoring.

They have battled beaurocracy to first get permission to rehabilitate the site and then to secure funding for the works. Congratulations guys and thank you for the opportunity to be involved!!!



Above: Direct seeding in the sprayed strips



Above: Part of the 2100 trees we planted at the Strathalbyn mine site.

## Angus Zinc Strathalbyn mine - Terramin

During August and September '07 we were involved in planting 2100 trees and shrubs at the Strathalbyn site of the new Angus Zinc mine.

The majority of plantings will eventually screen the tailings storage facility from the Langhorne Creek Rd.

The plants were all local species which were grown from locally collected seed. More seed was collected on site from the giant *Melaleuca lanceolata* - Dryland Teatree species. This will be used for further revegetation projects at the mine site also.

Initially Matt helped with the MARP - Mining and Rehabilitation Plan process 2 years prior to the mine getting approval. At present we are working with a company called Cooe Pty Ltd (previously Natural Resource Services) to continue with rehabilitation work in the mining industry.

## Scouts Murray Darling Rescue project

On 23rd & 24th of June Matt was involved in presenting 2 reptile shows to the Scouts SA groups, at the GWLAP - Goolwa to Wellington LAP and Greenfleet's major tree planting project in SA at Brinkley.

There were at least 150 people that attended the free shows at lunch time on both days.

Finch the Murray Darling Carpet Python, Redmond the Blue Tongue Lizard, Lightning the Bearded Dragon and Joanna the Goanna made appearances.

The animals as usual were used to reinforce the importance of habitat protection for native species.

Over the two days Scouts SA groups from all over the state planted over 17,000 local trees, shrubs, grasses and groundcovers.



Above: One of the reptile shows Matt presented for the Scouts kids

## Threatened Acacia project at Finiss

In late 2006 we were successful in obtaining a small contract in the Finiss area.

This project consisted of local provenance seed collection, propagation, tree planting and guarding, site maintenance for 1450 plants in total & watering in trees 3 times after planting.

The aim of the project is to provide a greater buffer and boost the existing population of the very rare Wattle - *Acacia pinguifolia*.

So far the success rate is above 95% from the last count whilst watering in January. We use a high quality wetting agent for all watering of plants.

For any projects in the dryer parts of SA I can't stress enough that the initial watering in with a wetting agent should be the norm for any tree planting. The use of water crystals at planting time is greatly beneficial too.



Above: Part of the 1450 local native plants put in at the Mclean property near Finiss.

## Tree planting projects

Last year we had a busy tree planting season which started in May and carried through to November.

A total of 16,387 plants were put in, all indigenous to each site. This was down on previous years due to the dry winter.

The 17 sites included Rockleigh, Bowhill, The Coorong, Strathalbyn, Langhorne Creek, Murray Bridge, Jervois & Tailem Bend. Most of the plants were hand planted.

The biggest site was at Langhorne Creek on Kelvin Candy's property, with 6500 trees planted in a day and a half. This project was subcontracted out to us from Greening Australia.

During winter '07 we also direct seeded approximately 60 hectares - equivalent to 165 linear Km's.

With our machine tree planter we can plant over 5000 trees per day in the sandy soils of the Mallee.



Above: Machine tree planting for Carbon credits near Langhorne Creek

## Plant profile - Weeping Sheoak

The Weeping Sheoak - *Allocasuarina verticillata* was formerly known as *Casuarina stricta*. It is a plant were you love them or loath them, I love them.

This plant is very adaptable to pretty well all soils in SA. Growing in low (300mm) and higher rainfall (800mm) areas.

The segmented leaves are very narrow and long with a greyish tinge. They can be roasted in the oven with fish dishes to add extra flavour. This was one traditional use for some Aboriginal groups. Another was to chew the young brown seed cones when heated over coals.

The wood is extremely attractive when turned or sanded and varnished. Many tools and carvings are still made from Sheoak wood.

The winged seed is dispersed naturally from the cones after fire or when cockatoos chew at them. When the cones are picked and stored in a dry room they will open and release the seed in a few weeks.



Above: Weeping Sheoak - *Allocasuarina verticillata*

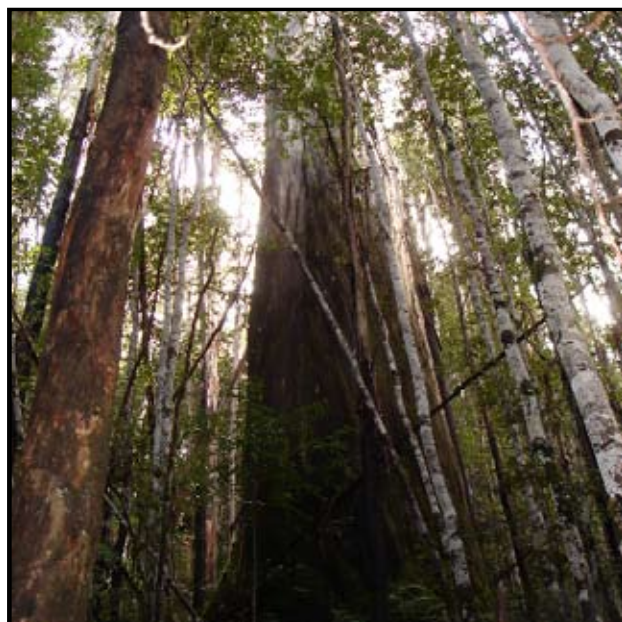
## The Big'un file

This is the tallest hardwood tree in the world, the Mountain Ash - *Eucalyptus regnans*.

This amazing species grows in the wet open forest areas of Victoria and Tasmania. The sight of a mature tree and the girth at the base of the trunk is simply unbelievable.

It is believed that specimens felled in the 1800's measured over 140m tall. Mostly nowadays they reach around 80m tall.

This species is still logged in both states. The wood is useful for many applications but mainly for building materials and pulp.



Above: Mountain Ash - *Eucalyptus regnans* in the Styx Valley Tasmania.